



CENTRAL FLORIDA DISASTER MEDICAL
COALITION (CFDMC)
RESPONSE & RECOVERY PLAN

UPDATE APPROVED BY CFDMC BOARD
JUNE 9, 2026

TABLE OF CONTENTS

1.0 INTRODUCTION	5
1.1 Purpose of Plan	5
1.2 Scope	5
1.3 Situation and Assumptions	5
1.4 Administrative Support	7
2. CONCEPT OF OPERATIONS	7
2.1 Introduction	7
2.2 Role of the Coalition in Events	9
2.2.1 Member Roles and Responsibilities.....	10
2.2.2 Coalition Response Organizational Structure.....	10
2.3 Response Operations	11
2.3.1 Stages of Incident Response.....	11
2.3.1.1 Incident Recognition.....	11
2.3.1.2 Activation.....	11
2.3.1.3 Notifications.....	11
2.3.1.4 Mobilization.....	13
2.3.1.5 Incident Operations.....	13
2.3.1.5.1 Initial CFDMC Actions.....	13
2.3.1.5.2 Ongoing CFDMC Actions.....	13
2.3.1.5.3 Information Sharing.....	13
2.3.1.5.4 Resource Coordination.....	14
2.3.1.5.5 Medical Surge Support Plans.....	14
2.3.1.6 Demobilization.....	14
2.4 Continuity of Operations	14
2.5 Recovery Plan	15
3. APPENDICES/ANNEXES	15
3.1 Contact information	15

3.2 HVA.....	15
3.3 Coalition Governance.....	15
3.4 Report and Status Forms	15
3.5. Scenario Specific Annexes.....	16
3.5.1 High Consequence Infectious Disease Annex.....	16
3.5.2 Behavioral Health Response Annex	16
3.5.3 Alternate Care Site Logistics Annex	16
3.5.4 Burn Annex	16
3.5.5 Family Reunification/Family Assistance Toolkit.....	16
3.5.6 Regional Trauma Coordination Plan.....	17
3.5.7 Pediatric Surge Annex.....	17
3.5.8 Mass Fatality Annex.....	17
3.5.9 Allocation of Scarce Resources Annex	17
3.5.10 Radiation Surge Annex	17
3.5.11 Extended Healthcare Downtime Impact Assessment	18
3.5.12 Supply Chain Mitigation Strategy.....	18
3.5.13 Chemical Surge Annex	18
3.5.14 Free Standing Emergency Department (FSED) Best Practice Guidelines	18
3.5.15 Cyber-Security Assessment	18
3.6 Mission Ready Packages.....	18
3.6.1 Regional Medical Assistance Team.....	19
3.6.2 Family Assistance Center response Team	19
3.6.3 Disaster Behavioral Health Response	19
3.6.4 Hospital Minimum Readiness Equipment.....	19
3.6.5 Region 5 MCI-ACS Response Caches	19
3.6.6 Incident Management Team (IMT).....	19
3.6.7 Regional Trauma Coordination center.....	19
3.6.8 Regional Ebola Cache	20
3.6.8 Evacuation Caches.....	20

4.0	<i>References & Resources</i>	20
-----	---	----

1.0 INTRODUCTION

1.1 PURPOSE OF PLAN

The mission of the Central Florida Disaster Medical Coalition (CFDMC or the Coalition) is to develop and promote healthcare emergency preparedness and response capabilities in the East Central Florida Domestic Security Task Force Region 5 (RDSTF Region 5) including Brevard, Indian River, Lake, Orange, Osceola, Martin, St. Lucie, Seminole, and Volusia Counties. The overarching goal is to assist Emergency Management and Emergency Support Function 8 (ESF8) with the National Preparedness Goals mission areas: Prevention, Protection, Mitigation, Response, and Recovery as it relates to healthcare disaster response. CFDMC does this through facilitation with hospitals, emergency management, Emergency Medical Services (EMS), public health, and other key partners to work collaboratively to build, strengthen, and sustain a healthcare preparedness and response system in the region, based on the capabilities, objectives and activities in the Administration for Strategic Preparedness and Response (ASPR) Hospital Preparedness Program (HPP).

The purpose of this plan is to provide general guidelines for a regional response to natural and manmade events that endanger the patients, visitors, staff, and family members of medical healthcare facilities in East Central Florida.

1.2 SCOPE

CFDMC is designated as the RDSTF Region 5 lead health and medical (ESF8) organization. The CFDMC response plan emphasizes strategies and tactics that promote communications, information sharing, resource coordination, and operational response and recovery planning with CFDMC members and other stakeholders. Coalition members are described in the CFDMC Preparedness Plan. This plan references existing regional and local plans, including the State of Florida Comprehensive Emergency Management Plan (CEMP), the RDSTF5 Operating Guide, the Tactical Interoperable Communications Plan (TIC Plan), and the county CEMPs. This plan does not supersede the authorities or any plans of the participating entities.

CFDMC has supported healthcare organizations such as hospitals and medical examiners in the development of Mutual Aid Agreements (MAA). Each county has signed a statewide MAA. CFDMC has an equipment management policy which outlines expected mutual aid provisions upon receipt of equipment purchased by the Coalition. The Coalition supported the medical examiners in the development of a regional MOU (Memorandum of Understanding). In 2025, CFDMC led a workgroup to develop and sign an MOU among all the Florida healthcare coalitions to enable cross-regional support and response.

1.3 SITUATION AND ASSUMPTIONS

Central Florida is uniquely vulnerable to large scale disasters due to its population and critical infrastructure. The 2024 US Census data shows more than 4.9 million people reside in the nine counties representing Central Florida (Central Florida Regional Domestic Security Task Force,

Region 5 or RDSTF-5. Winter residents dramatically increase this population. The region has large at-risk populations, including the elderly and pediatrics. Six of the nine counties have a relatively high score in the Social Vulnerability Index (SVI) and all counties within the region are at higher risk than more than 90% of the nation's counties. In addition, domestic and international tourists flock to Central Florida for golf, shopping, water sports, theme parks, conventions, and the speedway. Orlando is the number one most visited destination in the world. Orlando International Airport was the 7th busiest airport in the nation with 28 million annually. Visitors also arrive in Central Florida via cruises at Port Canaveral, Florida's fastest growing port and one of the busiest ports in the nation, with more than 5 million travelers annually. NASA and SpaceX have a rigorous launch schedule, with an average launch every five days at Brevard County's Cape Canaveral Space Force Station. Patrick Space Force Base is also located in Brevard County. The region has 161 miles of coastline from Volusia to Martin County. There are three large chemical manufacturing plants within the region, multiple international and commercial airports, both freight and passenger railroad service across the region. All these factors increase the potential for a large-scale event in Central Florida.

The Region has a robust healthcare system, including a Level I trauma center and a Level 1 pediatric trauma center in the metro Orlando area, five Level 2 trauma centers across the region, three children's hospitals and more than 90 acute care hospitals and free-standing emergency departments. The Level I trauma center is also a Radiation Injury Treatment Network (RITN) facility and has an ABA accredited Burn Center.

The CFDMC Readiness Assessment and Readiness Plan provide identifies regional risks and gaps to be addressed. The Governance Policy provides background, governance and member information. The CFDMC Hazard and Vulnerabilities Assessment (HVA) is updated annually and identifies regional risks and gaps to be addressed. These can be found at <https://www.centralfladisaster.org/resources>

The following are base assumptions for CFDMC and its members:

- A member organization or the community as a whole can be affected by an internal or external emergency situation that has impacted operations up to and including the need for a facility to evacuate.
- Impacted facilities have activated their emergency operations plan and staffing of their facility operations center.
- Local resources will be used first, and then State resources, followed by a Federal request as needed; however, State and Federal resources may not be available for 72-96 hours. State, and possibly Federal, resources may be staged closer to an impact area to avoid delays.
- The increased number of area residents and staff needing medical help may burden and/or overcome the health and medical infrastructure. This increase in demand may require a regional response and/or subsequent city, county, state, and/or federal level of assistance.
- Facilities will communicate their medical needs and non-medical needs to the jurisdictional emergency operations center. In the State of Florida, agencies communicate their needs through ESF8 at the county Emergency Operations Center (EOC). CFDMC personnel monitor all requests and try to identify local and regional assets to meet that need.
- Healthcare organizations will report status on situational awareness but are assumed to be able to handle the incident on their own as much as possible before asking for assistance.
- Healthcare organizations will take internal steps to increase patient capacity and implement surge plans before requesting outside assistance.

- Processes and procedures outlined in the response plan are designed to support and not supplant individual healthcare organization emergency response efforts.
- The CFDMC will promote integration with public sector response efforts.
- Except in unusual circumstances, individual private healthcare organizations retain their respective decision-making sovereignty during emergencies.

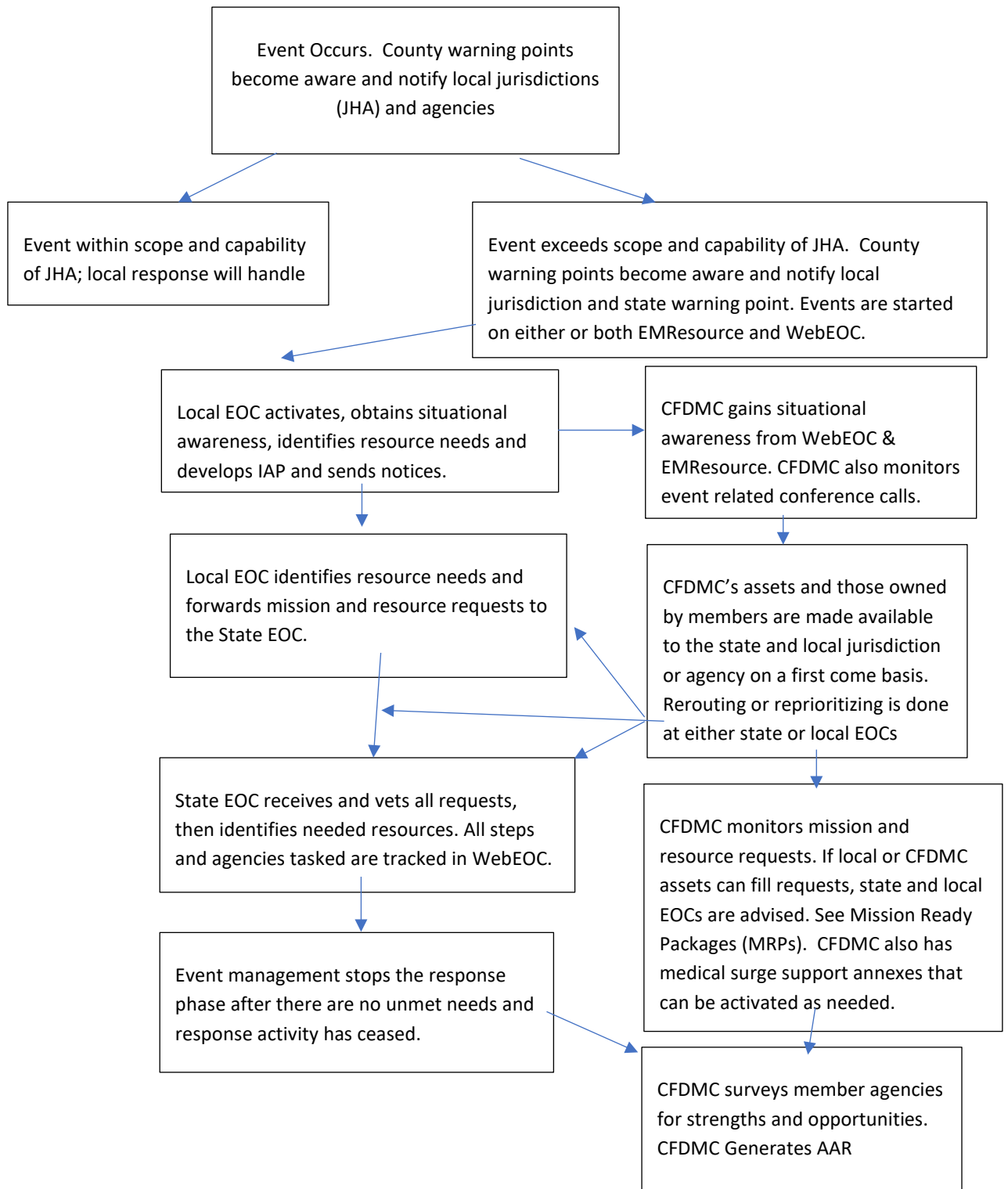
1.4 ADMINISTRATIVE SUPPORT

The original CFDMC response plan was provided to all members for review and input and approved by the CFDMC Board on June 18, 2019. The plan is posted to the website and is open to review and comment at all times. The CFDMC facilitates an annual review of the response plan, including any gaps identified during exercises and real-world events. The CFDMC Board approves the plan updates; the Board includes at least two members from each of the core member groups – hospitals, EMS, emergency management and public health. The final update is sent out to all members and posted on the website at <https://www.centralfladisaster.org/resources>

2. CONCEPT OF OPERATIONS

2.1 INTRODUCTION

The process outlined below describes the basic flow of a response to disaster and emergency situations with the steps and the activities that may need to be accomplished. Not all steps and activities will apply to all hazards.



2.2 ROLE OF THE COALITION IN EVENTS

CFDMC's primary response capabilities are supporting our member agencies in their response via situational awareness/information sharing, resource coordination and supporting medical surge support plans.

Information Sharing: The Coalition has redundant communication capabilities with its members (member organizations are posted on the website at <https://www.centralfladisaster.org/missionandactivities>).. During blue skies, the Coalition uses Constant Contact, social media and their website to share information on meetings, plans, trainings and exercises with its members. During exercises and grey skies, the Coalition uses the Everbridge health alert network to share information with members and EMResource to share information with response partners. In an event, members receive a wealth of information from multiple mechanisms, including the news media and local emergency management. The Coalition's role in information sharing is to monitor communications from local and State ESF8 and other sources and share information with member organizations that is not provided via other partners, such as regional status. During a regional event, CFDMC generates regional situation reports that offer timely and quick access to relevant information from local, state, and federal resources.

Resource Coordination: The process for redistribution of available resources in the event of a medical surge event is outlined below.

- The Coalition has a variety of resources available to members, including a regional medical assistance team, MCI/ACS caches, evacuation caches, and an Ebola cache. These resources and the method for requesting these is available at the Coalition website at <https://www.centralfladisaster.org/resources>
- If a Coalition member organization needs assistance during a disaster response (staff, equipment, supplies, or other resources), the member organization submits a request to the County Emergency Operations Center (EOC). It is the county's responsibility to try to fulfill the individual's request.
- If the County EOC is unable to fulfill the request, the County submits a mission request to the State EOC through WebEOC. Once a request has been received by the State EOC from a county, it is initially processed by the County Liaison Desk under the direction of the Operations Support Branch, who verifies the information. From there, it is assigned to the proper branch for tasking to the appropriate ESF. If the ESF can meet the provisions of the request, resource information is forwarded to the county EOC. If the ESF cannot provide the requested resources, it is then forwarded to the Logistics Section who will work with either private vendors or through the Emergency Management Assistance Compact (EMAC) to secure the resources. If the resources are identified from private sources, the vendor information is given to the county Emergency Operations Center.
- The Coalition monitors all resource requests and attempts to find needed resources from within the region. If a resource requested is readily available locally through the Coalition or other member organizations, the Coalition will notify the State ESF8 desk and the local requestor of the available local resources. If so directed by the State ESF8 desk, the Coalition will put the requesting organization in touch with the organization providing the resource to arrange transfer of the resource.

Medical Surge Support Plans: The Coalition and its members have developed numerous medical surge support plans and response assets. These can be found at: <https://www.centralfladisaster.org/resources>

Support of Local Member agencies: The Coalition staff are available to provide support for local EOC/ESF8 operations upon request. The Coalition will work with county EOCs to identify appropriate response roles for Coalition staff.

Additionally, the Coalition can facilitate conference calls or webinars for resource coordination with the members to discuss the issues, needs and potential solutions.

Bed reporting metrics are identified in the Agency for Healthcare Administration Health Facility Reporting Status System (AHCA HFRS). Time-sensitive performance metrics are included in the mission ready packages and are being developed as part of the EMResource operational protocols, including an emphasis on linking EMResource to hospital electronic medical records for real-time bed availability data.

2.2.1 MEMBER ROLES AND RESPONSIBILITIES

Hospitals: All hospitals within the region have MCI plans and the Coalition facilitates an annual MCI medical surge exercise. All hospitals have received a minimum hospital readiness package based on hospital size, including Personal Protective Equipment (PPE) and decontamination equipment. In accepting equipment, hospitals agree to the Coalition's coordination and resource support requirements. See Hospital Mission Ready Package for additional details.

Emergency Medical Services (EMS): EMS agencies include public and private services for medical care and transportation. EMS agencies within the region and across Florida have robust mutual aid agreements and strike teams. The Coalition coordinates with EMS agencies through EMResource which includes indicators and triggers for MCIs.

Emergency Management: City and County emergency management offices provide event management within their jurisdictions. The Coalition coordinates with EM offices through monitoring of WebEOC.

Public Health: In eight of the nine counties within the region, the county health department is the county ESF8 lead. In Orange County, the EMS Office of the Medical Director is the ESF8 lead. The Coalition coordinates with ESF8 through monitoring of WebEOC. In addition, county health departments provide staffing for special needs shelters.

Coalition members also include all CMS provider types and other stakeholders.

2.2.2 COALITION RESPONSE ORGANIZATIONAL STRUCTURE

The Coalition currently has one full-time position (the Executive Director) and two part-time positions (the project manager and trauma clinical advisor). A Deputy Director position will be hired during the summer 2026. The Executive Director takes the lead on assessing and providing regional situational awareness, and the Project Manager takes the lead on monitoring resource requests. Each is trained in both functions and can provide back-up to the other. The Deputy Director will be trained in both roles. The Coalition led the development and execution of a memorandum of understanding with other Florida Healthcare Coalitions to support each other during a response that impacts coalition staff or during a long-term response.

2.3 RESPONSE OPERATIONS

2.3.1 STAGES OF INCIDENT RESPONSE

The stages of any event include incident recognition, activation, response operations, demobilization and recovery.

2.3.1.1 INCIDENT RECOGNITION

There are a variety of ways in which CFDMC may become aware of an event, including:

- Notification through a county alert system
- Notification through event management software (such as WebEOC, EMResource, the Florida Health Alert Network, etc.)
- Notification from a member agency
- Notification from a state or federal partner
- Notification from open sources (such as the media)

2.3.1.2 ACTIVATION

The Coalition staff activate whenever the state EOC is activated or for any event within the region that is larger than a single county. Coalition activation depends on incident type and is detailed in the various annexes in 3.0. The Coalition is also available to support a local jurisdiction or single county events if requested.

2.3.1.3 NOTIFICATIONS

CFDMC facilitated a workgroup of subject matter experts who defined the essential elements of information (EIs) that are needed and/or reported by CFDMC members during an event (e.g., number of patients, severity and types of illnesses or injuries, operating status, resource needs and requests, bed availability, etc.). EMResource is used to capture and share information across the region.

Below are the EIs identified by the Region 5 Communication Workgroup (note: definitions of the EIs are included in EMResource):

- Audible Alert
- Trauma Alert
- HazMat Alert
- MCI Alert
- Patient Tracking
- Decedent Tracking
- BOLO
- Two-way communication
- Event Notice
- Real Time Data
- PC or Mobile

- Use for real World and Exercise
- Patient report
- state
- ccn
- npf
- reporting_for_date
- hospital_name
- hospital_county
- street_address
- zip_code
- hospital_patient_treatment_status
- hospital_census_total
- all_hospital_beds
- hospital_inpatient_beds
- hospital_inpatient_bed_occupancy
- hospital_inpatient_beds_available
- icu_beds
- icu_bed_occupancy
- icu_beds_available
- structural_damage
- evacuation_type
- evacuation_status
- reentry_status
- power_status
- generator_fuel_status
- generator_fuel_type
- hvac_generator_status
- normal_water_supply
- dialysis_reliable_water_supply
- sewer_status
- immediate_needs

EMResource provides region-wide visibility and interoperability across a multi-jurisdictional, multi-agency support and response environment and allows users the option to link incidents in a tree format, enabling consolidated reporting. EMResource includes alerting and communications capabilities to send individual and group notifications and messages within and outside the system, including:

- Incident/Event Alerts – notifies users of new incidents
- Resource Request Alerts – notifies resource owners that their resource has been requested
- Mission Assignment Alerts – notifies users that a mission is being requested of them
- Action Request Alerts – notifies users that a response is requested

Other redundant communications platforms include Everbridge, the CFDMC website, Constant Contact, cell phones, radio systems, email and social media (Facebook and LinkedIn).

2.3.1.4 MOBILIZATION

Coalition staff operate predominately through a virtual environment. Upon activation, the Executive Director takes the lead in gathering information and providing situation reports, and the Projects Manager takes the lead in monitoring resource requests and coordinating those that can be filled with Coalition or member resources. Both can perform in either role as needed.

2.3.1.5 INCIDENT OPERATIONS

The Coalition members are the responders, with Coalition equipment, supplies, staff, and specialty teams available to support upon request. The Coalition has purchased equipment for its member agencies and established caches of equipment. If the Coalition can identify an asset in need, it will notify the state EOC of such capacity. The Coalition has formed volunteer response teams that are available at the request of a local jurisdiction or the state, including a regional medical assistance response team, a regional trauma coordination center team, a family assistance center response team and behavioral health response. Additional details on the Coalition response teams and assets, including mission, limitations, equipment, personnel, time to deploy, and costs, are available in the Mission Ready Packages in Section 3.6.

2.3.1.5.1 INITIAL CFDMC ACTIONS

CFDMC and all of its members, particularly emergency management organizations and public health agencies, have visibility into member resources and resource needs (e.g., personnel, teams, facilities, equipment, and supplies) to meet the community's clinical care needs during an emergency. Outlined below are the general principles when coordinating resource needs during emergencies. All nine counties in the region use the same event management system as the state (WebEOC) and the Coalition has viewable rights to all events and resource requests. EMResource is also monitored for hospital status, ER saturation, and other applicable statuses.

2.3.1.5.2 ONGOING CFDMC ACTIONS

The Coalition monitors WebEOC and EMResource during all major events. In accordance with state laws and plans notification of county ESF8 leads for situational awareness and resource requests, each county EM/ESF8 has a process the Coalition will support, as requested, but will not duplicate. The Coalition monitors all situational reports and resource requests to remain aware of operational status.

2.3.1.5.3 INFORMATION SHARING

During exercises and grey skies, the Coalition uses the Everbridge health alert network to share information with members. In an event, members receive a wealth of information from multiple mechanisms, including the news media and local emergency management. The Coalition's role in information sharing is to monitor communications from local and State ESF8 and other response partners and share information with member organizations that is not readily available, such as regional status. For example, the CFDMC generated regional situation reports during the COVID response that included regional data, links to resources, and highlights from discipline specific coordinating calls. CFDMC has recently engaged the social media platforms LinkedIn and Facebook to further its communication reach.

2.3.1.5.4 RESOURCE COORDINATION

In an event, the Coalition can provide assets it controls to agencies in need after they have gone through the state defined process that is managed first at the county level and then at the state level. In the event of multiple requests for the same asset, the Coalition will fill requests on a first come, first served basis. In the event multiple requests come in for the same item, the first request would be filled, and subsequent requests would be routed to the state to identify additional assets. It is the Coalition's responsibility to offer assistance; the management of resources requests and allocations rests with local and state authorities. At no time would the Coalition redirect or change the deployment of assets. State, territorial, county, or local officials would be responsible for any such modification of destination or other deployment specifics.

Resource management includes logging, tracking, and vetting resource requests across the region and in coordination with the ESF8 lead agency. This is done at the county level ESF8. The state uses WebEOC to track all mission requests. The Coalition monitors all resource requests and attempts to find needed resources from within the region.

CFDMC has worked with distributors to understand and communicate which health care organizations and facilities should receive prioritized deliveries of supplies and equipment (e.g., personal protective equipment [PPE]) depending on their role in the emergency. In March 2019, the Coalition distributed a supply chain integrity assessment to hospitals and nursing homes. The data was aggregated and used to identify gaps and mitigation strategies. In 2021, the Coalition drafted the Health Care Coalition Supply Chain Mitigation plan as an annex to our response plan. This plan is updated annually or following any large-scale event, such as COVID.

2.3.1.5.5 MEDICAL SURGE SUPPORT PLANS

The Coalition and its members have developed numerous medical surge support plans. See Section 3.5 for a description of these plans.

In addition, the Coalition maintains several regional medical surge response assets. See Section 3.5 for a description of these assets.

The plans and regional assets can also be found at <https://www.centralfladisaster.org/resources>

2.3.1.6 DEMOBILIZATION

The Coalition's equipment management policy requires that response equipment purchased by the Coalition be made available to other partners as outlined below. The policy also requires that the requesting agency ensure that the equipment is returned to the Coalition or member agency in good condition or replace equipment as needed.

After all significant events and exercises the Coalition queries its members and produces an after-action report and then works to close any identified regional gaps.

2.4 CONTINUITY OF OPERATIONS

The CFDMC has a Continuity of Operations Plan (COOP) which establishes policy and guidance to ensure the execution of the mission-essential functions for the CFDMC in the event that an emergency threatens or incapacitates operations. The CFDMC COOP is an annex to the response plan. The Coalition provides members with access to free training to develop COOPs.

2.5 RECOVERY PLAN

The Coalition integrates with key partners and county and state recovery support function health and social services leads to support members in the transition to recover. This includes:

- Sharing appropriate recovery information with its members
- Working with members to contribute to the jurisdictional pre-disaster recovery planning process
- Supporting the healthcare workforce in recovery, including the provision of appropriate behavioral health resources
- Coordinate as appropriate the recovery of critical infrastructure (e.g. equipment, mission ready packages, costs, etc.)
- Support the assessment of community recovery needs and priorities, including communities most impacted by disasters
- Ensure that all Coalition-owned equipment used during an event must be rehabbed and returned to response readiness.
- Connect members with recovery assistance programs including support with initial disaster cost estimates and assistance with state and federal disaster recovery funding information and application as applicable

3. APPENDICES/ANNEXES

3.1 CONTACT INFORMATION

Contact information for Coalition personnel and a list of Coalition Members can be found at: [Mission and Activities \(centralfladisaster.org\)](#) (click on Our Members).

3.2 HVA

The regional Hazards & Vulnerability Assessment (HVA) can be found at: <https://www.centralfladisaster.org/resources>

3.3 COALITION GOVERNANCE

The Coalition's governance policies, including incident response, financial policies and personnel policies and position descriptions can be found in the CFDMC Governance Policy at <https://www.centralfladisaster.org/resources>

3.4 REPORT AND STATUS FORMS

CFDMC utilizes ICS report and status forms as appropriate.

3.5. SCENARIO SPECIFIC ANNEXES

CFDMC has worked with subject matter expert workgroups to develop and maintain detailed response plans for scenario specific event response as described below. These plans are typically updated annually and can be found at <https://www.centralfladisaster.org/resources>

3.5.1 HIGH CONSEQUENCE INFECTIOUS DISEASE ANNEX

High consequence infectious diseases (HCIDs) include hemorrhagic fever viruses (Ebola, Marburg, etc.) and other highly contagious diseases (such as MERS-CoV, SARS, COVID-19 and other pandemic strains of the influenza virus). HCIDs and other infectious diseases have the potential to significantly impact individual organization operations, the healthcare system, and the health and safety of personnel and the general public. Many diseases could result in an epidemic and could lead to a pandemic (an epidemic that occurs on a worldwide scale). The Infectious Disease Annex was developed and is maintained by the Emerging Infectious Disease Collaborative workgroup.

3.5.2 BEHAVIORAL HEALTH RESPONSE ANNEX

Disasters may have severe emotional impact on survivors, their families, and responders and cause substantial destabilization of patients with existing behavioral health issues. CFDMC has worked with hospitals and outpatient care providers, including behavioral health professionals, to identify a regional approach to assess and address the needs of the community. Behavioral health organizations are valuable CFDMC members and can provide needed support to survivors, responders, and people with pre-existing behavioral health concerns. CFDMC worked with subject matter experts to develop and maintain the Disaster Behavioral Health Plan.

3.5.3 ALTERNATE CARE SITE LOGISTICS ANNEX

The Coalition has leveraged funding from a variety of sources to establish a large cache of medical equipment/supplies across Region 5. This equipment has been strategically placed throughout the region with custodial agencies. Included are mass casualty trailers, ACS start-up equipment, and other specialized equipment. The Alternate Care Site Regional Logistics Plan outlines processes and responsibilities for maintenance, requests for, deployment of, and rehabilitation of ACS equipment caches.

3.5.4 BURN ANNEX

An event that exceeds the resources of a single jurisdiction will require the use of a tiered approach beginning with the local community hospitals and the regional burn center and engaging a broad array of regional and national stakeholders depending on the scope of the incident. The regional surge burn annex identifies the key roles of state and local responders, and those of the American Burn Association (ABA) and ASPR during a burn mass casualty incident.

3.5.5 FAMILY REUNIFICATION/FAMILY ASSISTANCE TOOLKIT

An incident that causes mass fatalities and/or mass casualties will require a coordinated effort to provide aid to survivors, families, and loved ones with multi-jurisdictional and multi-agency resources. The CFDMC Family Assistance Center (FAC) Response Plan addresses the recruiting and response aspects of deploying a FAC team in our region and setting up a FAC to implement the family assistance process post-incident or disaster. The Coalition has also provided regional partners with an FRC/FAC toolkit which includes a county plan template, a hospital plan template, a school district plan template, and tabletop exercise materials.

3.5.6 REGIONAL TRAUMA COORDINATION PLAN

The goal of the Region 5 Trauma Coordination Center Plan is to ensure load-balancing across healthcare facilities and systems so that the highest possible level of care can be provided to all patients who need that care before transitioning hospitals toward crisis measures. The plan was developed by the Region 5 Trauma Advisory Board Clinical Leadership and Preparedness Committees to respond to a catastrophic event that produces a large number of trauma casualties. The plan is based on the concepts outlined in the ASPR Medical Operations Coordination Cells (MOCCs) initiative. The plan focuses on the delivery of healthcare services and operates as a component of ESF8 activities, bringing the medical aspect into emergency operations centers (EOCs) to guide the appropriate movement of patients along the care continuum. This plan will inform the development of a regional medical operations coordination center in the coming year.

3.5.7 PEDIATRIC SURGE ANNEX

The purpose of the Central Florida Disaster Medical Coalition (CFDMC) Pediatric Surge Annex is to provide a functional annex for all stakeholders involved in an emergency response within Region 5 in order to protect children and to provide appropriate pediatric medical care during a disaster. The plan was developed and is maintained by the Pediatric Workgroup.

3.5.8 MASS FATALITY ANNEX

The CFDMC worked with the region's medical examiners and other stakeholders to develop a regional mass fatality plan. This plan includes information on how CFDMC and member organizations manage a mass fatality event within the region. The Coalition facilitated development of and supports a Memorandum of Understanding among all the region's Medical Examiners. At the request of other Medical Examiners around the state, we are currently exploring how to expand this MOU to Medical Examiners outside our region.

3.5.9 ALLOCATION OF SCARCE RESOURCES ANNEX

The purpose of the Allocation of Scarce Resources Annex is to provide guidance for emergency medical services, healthcare systems, and facilities to plan, prepare for and respond to emergencies which present in resource limited environments. The guidelines were developed by a multi-disciplinary subject matter expert workgroup.

3.5.10 RADIATION SURGE ANNEX

The Radiation Surge Annex provides guidance to support a coordinated healthcare response to a radiation emergency in which the number and severity of exposed or possibly exposed patients challenges the capability of CFDMC member facilities. The annex outlines specific incident response, treatment, and response protocol necessary to properly plan for, manage, and care for patients during a radiological emergency. The Radiation

Annex was developed and is maintained by a subject matter expert workgroup and included other coalitions across the state.

3.5.11 EXTENDED HEALTHCARE DOWNTIME IMPACT ASSESSMENT

The healthcare delivery system is defined as the network of healthcare facilities and persons who carry out the tasks of providing healthcare services to the public. This includes hospitals and health systems, public health, EMS providers, long-term care providers, behavioral and mental health providers, specialty service providers (dialysis, pediatrics, urgent care, district Medical Examiners, funeral directors, etc.), support service providers (laboratories, pharmacies, blood banks, poison control, etc.), primary care providers, community health providers, and other healthcare and response stakeholders. The assessment identifies the impact of an extended healthcare downtime event and will inform development of a plan over the coming year.

3.5.12 SUPPLY CHAIN MITIGATION STRATEGY

The Region 5 healthcare supply chain involves the flow of numerous product types from manufacturer to patient and requires the participation of various stakeholders who work in concert to achieve the goal of meeting patient care needs. The Coalition assessed supply chain gaps and worked with members to outline and maintain a strategy to mitigate these gaps.

3.5.13 CHEMICAL SURGE ANNEX

A chemical surge annex was developed in February 2024 and was tested in the statewide chemical surge tabletop on March 6, 2024 and lessons learned were used to update the annex. A subject matter expert workgroup is responsible for maintenance of the annex.

3.5.14 FREE STANDING EMERGENCY DEPARTMENT (FSED) BEST PRACTICE GUIDELINES

Based on lessons learned from the 2023 regional mass casualty incident exercise, a subject matter expert workgroup developed and distributed FSED best practice guidelines. These were tested during the 2024 regional exercise and are maintained and updated as new best practices are identified.

3.5.15 CYBER-SECURITY ASSESSMENT

Cyber-attacks remain one of the most significant threats to healthcare. CFDMC conducted a cyber-security assessment with its members in 2025 and updated the assessment in 2026. CFDMC will work with the Central Florida Cyber Coalition to develop a cyber security plan in 2027.

3.6 MISSION READY PACKAGES

The Coalition supports and/or maintains the following response teams and response assets, available to local jurisdictions upon request. Mission ready packages for each are available at:

<https://www.centralfladisaaster.org/resources>

3.6.1 REGIONAL MEDICAL ASSISTANCE TEAM

The Central Florida Disaster Medical Team (CFDMT) is a Regional Medical Assistance Team (RMAT), a group of volunteer responders whose purpose is to stabilize, treat, and transfer, as appropriate, patients during a disaster or during a community-sponsored event such as air shows, marathons, and concerts. The CFDMT consists of trained /credentialed command staff, physicians, physician assistants, nurses, emergency medical technicians, paramedics, and administrative and logistics personnel. Mission types include set-up and operation of alternate care sites and responder rehabilitation. The team regularly exercises by providing medical first aid/alternate care site services during community events, such as air shows and marathons. During 2020 and 2021, the CFDMT provided an Incident Management Team (IMT) to assist state operations during the pandemic. During 2024, the team moved to a new warehouse in Lake County and are currently working on updating the inventory and developing a credentialing and training/exercise plan.

3.6.2 FAMILY ASSISTANCE CENTER RESPONSE TEAM

The Regional Family Assistance Center Team can, at the request of a local jurisdiction, quickly set up and initially operate a Family Reunification Center/Family Assistance Center (FRC/FAC).

3.6.3 DISASTER BEHAVIORAL HEALTH RESPONSE

Disaster Behavioral Health (DBH): The Coalition maintains DBH liaisons able to assist local and regional ESF8 in determining and meeting the disaster behavioral health needs of an event. The Coalition partners with and provides members to the Florida Crisis Response Team for DBH strike teams.

3.6.4 HOSPITAL MINIMUM READINESS EQUIPMENT

The Coalition has purchased and distributed equipment across the region, including decontamination and PPE for hospitals to respond to mass casualty incidents.

3.6.5 REGION 5 MCI-ACS RESPONSE CACHES

The Coalition has purchased, and distributed mass casualty incident (MCI) and alternative care site (ACS) caches which are staged throughout the region to support the initial response to a mass casualty event. The MCI and ACS caches in most areas can support 100 green and yellow patients; in Orange County there is a 500 patient MCI cache and a 250 patient ACS cache. The caches were assessed during late 2023 and all tents have been re-skinned.

3.6.6 INCIDENT MANAGEMENT TEAM (IMT)

The Coalition supports the regional Incident Management Team (IMT) to be able to respond to anywhere in the region or state to assist local Incident Command with the management of an emergency event.

3.6.7 REGIONAL TRAUMA COORDINATION CENTER

The Region 5 Trauma Coordination Center ensures load balancing and appropriate transport during large scale, high patient volume events. The Coalition will be working with the Florida Committee on Trauma and the other Florida healthcare coalitions to develop a statewide mass casualty incident process and exercise over the coming year.

3.6.8 REGIONAL EBOLA CACHE

As part of the region's strategy to effectively respond to an HCID (high consequence infectious disease), the Coalition worked with the region's hospitals to standardize PPE for Ebola Virus Disease, including purchasing equipment for each hospital for initial response, a deployable cache, and establishing donning/doffing protocols.

3.6.8 EVACUATION CACHES

The Coalition has established a strategy to place evacuation caches in the north, central and southern part of the region. The first cache was placed at the Orlando Regional Medical Center in 2023. A second cache was placed at Cleveland Clinic Tradition Hospital in June 2024. The final cache was placed at AdventHealth Daytona Beach in January 2025.

4.0 REFERENCES & RESOURCES

The Response/Recovery Plan and all Annexes are can be at the Coalition website at:

<https://www.centralfladisaster.org/resources>

Other Resources:

[National Hurricane Center \(noaa.gov\)](https://www.nhc.noaa.gov)

[Weatherstem: Weather Technology for Safety and Athletics cdn](https://www.weatherstem.com)

Orange: [Welcome to WeatherSTEM](https://www.weatherstem.com/orange)

Osceola: [Welcome to WeatherSTEM](https://www.weatherstem.com/osceola)

Lake: [Welcome to WeatherSTEM](https://www.weatherstem.com/lake)

Seminole: [Welcome to WeatherSTEM](https://www.weatherstem.com/seminole)

Road Closures:

MSN Traffic: [Traffic | Orlando, FL \(msn.com\)](https://www.msn.com/traffic/orlando-fl)

FL511: [FL511 | Florida Traffic | Commuter Information](#)

FDOT: [Traffic Warnings and Updates \(fdot.gov\)](#)

I-4: [I-4 Ultimate \(i4ultimate.com\)](#) Doesn't go anywhere. Assume that since this project has been completed, they no longer operate the website.

FHP: [Florida Highway Patrol Current Traffic Incidents \(flhsmv.gov\)](#)

Curfews:

Orange County: [Orange County Sheriff's Office \(ocso.com\)](#)

Osceola County: [Osceola County Sheriff's Office | Sheriff Marco Lopez #TogetherAsOne \(osceolasheriff.org\)](#)

Lake: [LAKE COUNTY SHERIFF'S OFFICE \(lcso.org\)](#)

Seminole: [Seminole County Sheriff's Office \(seminolesheriff.org\)](#)

City of Orlando Police Department: [Orlando Police Department - City of Orlando](#)

FDLE Statewide Police Department List: [Police Department Directory \(state.fl.us\)](#)

Statewide Sheriff's Office List: [Sheriff's Office Directory \(state.fl.us\)](#)

Utility Provider Outages:

FPL: [Power Tracker Map \(fplmaps.com\)](#)

OUC: [Outage Map \(ouc.com\)](#)

Duke Energy: [Outage Map - Duke Energy \(duke-energy.com\)](#)

SECO: [Outage Map | SECO Energy](#)

Cell Provider Outages:

T-Mobile: [Signal issues / no service troubleshooting | T-Mobile Support](#)

Xfinity: [Check for a service outage - Xfinity Support](#)

Mint: [My service isn't working - how can I resolve? | Mint Mobile](#)

Verizon: [Verizon wireless outage & network notifications FAQs | Verizon](#)

AT&T: [AT&T Service Outage Information \(att.com\)](#)

School Districts:

Orange: <https://www.ocps.net/>

Osceola: <https://www.osceolaschools.net/>

Lake: <https://www.lake.k12.fl.us/>

Seminole: <https://www.scps.k12.fl.us/>

Local Government:

MyFlorida.com: <http://www.myflorida.com/>

Orange: <https://www.orangecountyfl.net/>

Osceola: <https://www.osceola.org/>

Lake: <https://www.lakecountyfl.gov/home>

Seminole: <https://www.seminolecountyfl.gov/>

Charitable Donations:

American Red Cross: <https://www.redcross.org/donate/hurricane-ian-donations.html/>

Volunteer Florida: <https://www.volunteerflorida.org/donatefdf/>

Theme Parks, Airports & Transportation:

Central Florida Expressway Authority: <https://www.cfxway.com/>

Sunrail: <https://sunrail.com/>

Greater Orlando Aviation Authority: <https://www.orlandoairports.net/>

University of Central Florida: <https://www.ucf.edu/>

Walt Disney World Resort: <https://disneyworld.disney.go.com/>