

## MOULAGE SIMULATION - 4/25/24

### CASUALTY REFERENCE GUIDE

Thank you for being a part of this important Mass Casualty Simulation. This guide will help as reference when making up the many victims involved in this exercise. It is designed to be used in conjunction with the training or live application video (if unable to attend training) to be viewed before the event day.

Each 'victim' will have a **TRAUMA TRIAGE TAG**, describing their wounds. The 3 categories are: **GREEN**: Least amount of visual trauma/wounds. **YELLOW**: More severe cuts/burns/injuries. **RED**: The most severe wounds.

*Besides this guide, you may also refer to the "Triage Tags w/ Makeup Info" charts, which defines the items used to create each injury.*

All supplies will be provided at the application site, including Makeup Colors (Fantasy FX Cream Makeup), Prosthetic Appliances (for the most severe), Blood (Thick paste to spread on skin/clothing), Dirt (in a 'powder sock' for easy application), 99% alcohol (to apply 'Watermelon' Prosthetics to skin), as well as application tools/utensils, table covers, cleaning supplies, gloves, etc. Please try to keep application area as clean/organized as possible while working, and use hand sanitizer frequently (provided in moulage kit).

*For any Major Emergency issues regarding applications that come up during the event, you may call/text Alan Ostrander of AEO Studios at: 407-493-8202.*

## **“GREEN” Trauma (least severe):**

- Mostly small lacerations, 1<sup>st</sup> degree burns, dirt/soot
- No prosthetic appliances needed, just color

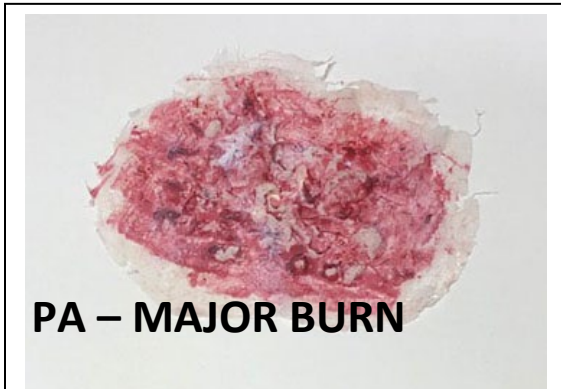
Small cuts/lacerations = black pencil line with blood on top

Bruises & minor burns are small amounts of red/black makeup worked into the skin – can use a little dirt on top.



**“YELLOW” (Medium Severity):**

- More intense than green  
These are a mix of Painted (MUP) and Prosthetic (PA) wounds as defined on the Triage Breakdown Sheets.
- For Prosthetic Appliances (PA): These are made with “Watermelon”. Apply with 99% alcohol, and then extend around the prosthetic area with Makeup (MUP) and Dirt  
*(See detailed instructions on applying Watermelon Prosthetics below)*
  - o These will be **Burns / Glass Shards / Swollen areas / Cuts/Open Wounds**
- More dirty/bloody than “Green” Triage – Can have some Blood and Dirt in areas with no visible wounds (back of head wound/in hair, small amount smeared on hands/arms/etc.)
- 







**“RED” (Most Severe):**

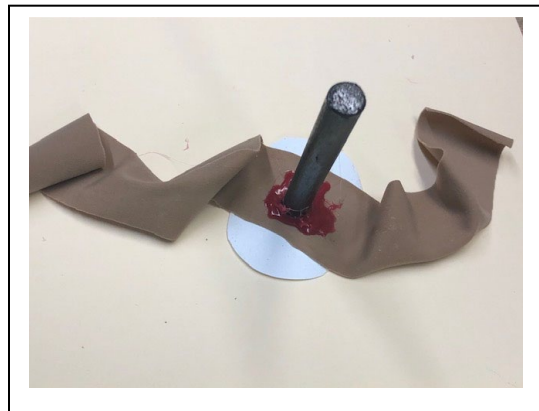
- These are a variety of severe, major burns, large wounds, cuts, pieces of glass embedded in skin, and larger metal ‘rebar’ pieces impaled into victims.
- For the larger, Major Burns: These are the larger, more textured watermelon appliances, extended out with red makeup & dirt/soot. Just larger and more intense than the Yellow victims.



## Larger “Impalement” rigs

– These are premade ‘strap-on’ appliances designed to go UNDER clothing (IF Possible – they may also be strapped on outside if clothes cannot be cut). In the moulage kit, there are scissors to cut holes in clothing, and/or cut/distress the clothing a little. The exposed piece of “rebar” is threaded through the hole in the clothing and tied around the arm or leg with the strap attached. Then, blood is added to clothing around puncture site.

There will also be a few “specialty rigs/appliances”, such as ‘broken eyeglasses embedded in eye’ and ‘exposed fracture wounds’ which will have application instructions included with them.



## GENERAL NOTES

- All supplies needed will be in the “Moulage Kit” which has already been delivered to the Volunteer Reception Center.
- Please have Volunteers/Organizers at location help to ‘wrangle’ the victims, and get them through the makeup process quickly & efficiently.
- Makeup should be applied in “assembly line” formation to get everyone out on time.
  - At minimum, we recommend (if possible):
    - 1 Person applying prosthetic wounds
      - (MUP Artist)
    - 1 Person applying makeup color
      - (MUP Artist OR Volunteer)
    - 1 Person applying blood/dirt (use gloves provided) (Volunteer)
- All victims will have a “Triage Tag”, describing their exact wounds. Please try to match up application as close as possible, however Speed is the most important factor – getting them out FAST. (Some injuries may be ‘inferred’, not actually visible – i.e.: tourniquet applied around wound, or ‘severed’ arm, etc.)
  - *Severed Arm = Have them pull arm out of sleeve, and into shirt, then dirt/blood on sleeve area.*

- Applications Must be done **QUICKLY**. They do not need to be “film quality” – just represent the wounds described.
- **Please let victims know:** The Paste Blood does not totally dry and **it will transfer**. PLEASE be careful and do not get blood on everything. A Little bit goes a Long way.
- If they are wearing a ‘Watermelon Prosthetic Appliance’, they will just peel it off for removal and wash up with soap/water. For other makeup, they will just wash with good soap/water to remove.
- *All appliances are made from FDA approved ‘Watermelon’ Makeup. There is no latex used.*
- **Have FUN! This is going to be a great simulation/event!**

### How to apply ‘Watermelon’ Prosthetic Appliances

Apply 99% Isopropyl Alcohol liberally to the area the appliance is to be attached to.

Place the appliance into the still wet alcohol. Try to remove as many air pockets under the piece as possible. Press and hold the appliance in place until it bonds.

Continue laying the appliance into the alcohol, pressing as you go.

Apply alcohol to the top of the appliance. This makes the appliance almost clear. No need for foundation.

Blend the appliance with alcohol this improves the clarity and softens the plastic. Sometimes your finger can help blend the edge too if the Water-Melon™ is soft enough.

For Removal: The appliance will just peel off, and the skin cleaned with good soap & water.

*Y&C Studios, Inc. 2200 D. Forsyth Rd. #A-15 Orlando, FL 32807 [www.yandcstudios.com](http://www.yandcstudios.com)  
 You can also search for Michael D. Forsyth on YouTube for visual step by step instructions.*