



RDSTF-5 Trauma Advisory Board

Region 5 Mass Casualty Incident (MCI) Trauma Coordination Plan

Approved by RDSTF5 Trauma Advisory Board
Executive Committee June 8, 2021

Approved by CFDMC Board on June 15, 2021

Update Approved by RDSTF5 Trauma Advisory
Board Executive Committee 12-6-22

Annual Update 5-24-23

Overview

Central Florida is uniquely vulnerable to large scale disasters. The July 2019 US Census estimates 4.5 million people reside in the nine counties representing Central Florida (Central Florida Regional Domestic Security Task Force, Region 5 or RDSTF-5). Winter residents dramatically increase this population. In addition, domestic and international tourists flock to Central Florida for golf, shopping, water sports, theme parks, and conventions. Orlando is the number one most visited destination in the world. Orlando International Airport was the 10th busiest airport in the nation before the pandemic with approximately 50 million passengers each year and rebounded at twice the average rate of travelers in December 2020. Visitors also arrive in Central Florida via cruises at Port Canaveral, Florida's fastest growing port and the second busiest port in the world, with more than 5 million travelers annually. There are three large chemical manufacturing plants within the region. There are multiple international and commercial airports, as well as both freight and passenger railroad service across the region. All of these factors increase the potential for a large-scale trauma event in Central Florida.

The Region has a robust trauma system, including a Level I trauma center and a Level 1 pediatric trauma center in the metro Orlando area, and six Level 2 trauma centers across the region. However, in an event that produces a large number of trauma patients, an individual trauma center's capabilities and capacities would soon be overwhelmed and may even overwhelm the region's capabilities and capacities.

Goal

The goal of the Region 5 Trauma MCI Coordination Plan is to ensure load-balancing across healthcare facilities and systems so that the highest possible level of care can be provided to all patients who need that care before transitioning hospitals toward crisis measures. The plan is based on the concepts outlined in the ASPR Medical Operations Coordination Cells (MOCCs) initiative. The plan focuses on the delivery of healthcare services and operates as a component of the Emergency Support Function #8, Public Health and Medical Services (ESF-8) activities, bringing the medical aspect of ESF-8 into emergency operations centers (EOCs) to guide the appropriate movement of patients along the care continuum.

Objectives and Priorities for the Region 5 MCI Trauma Coordination Plan:

Objective: The Region 5 MCI Trauma Coordination Plan (the plan) makes organization and foundational process information and data available to stakeholder-informed decision-makers to balance patient load and ensure high-quality care. The plan ensures that clinical decision-making directs the movement of patients and resources from one facility to another or re-directs referrals that would usually go to an overwhelmed facility or system to one with capacity.

The **priorities** of the Region 5 MCI Trauma Coordination Plan include the following activities:

1. **Collecting, analyzing, and disseminating hospital-capacity information:** One of the primary roles of the plan is to collect and analyze the information provided by each stakeholder (e.g., EMS, healthcare facilities). The staff identified in the Region 5 Trauma Coordination Center (Trauma Coordination Center or RTCC) within the plan analyze and disseminate data to stakeholders to support comprehensive situational awareness of the region and available resources. This does not replace broader EOC-based information / intelligence functions.
2. **Establishing protocols, systems, and triggers:** The staff identified within the plan in the Trauma Coordination Center facilitate the collection and reporting of healthcare-specific data elements; inform operational planning and stakeholder communications; and a clinician initiates regional and inter-regional transfer decision-making.
3. **Acting as a single point of contact (POC) for referral requests and life-saving resources:** The plan provides a single POC in a Trauma Coordination Center, as part of the impacted EOC, for healthcare facilities seeking assistance with patient transfers and for healthcare system partners in the region that have resources that can help decompress the load in those facilities.

The plan **achieves its objectives and priorities** primarily by the following activities:

- **Integrating with the Florida public health and healthcare response system** to assure coordination of response actions. The plan is activated by the local EOC in response to an event that will overwhelm the county's trauma system and the Trauma Coordination Center is under the local jurisdiction's Operations/ESF-8 section (see Figure 1).
- **Adding clinical staff** to existing EOCs
- **Establishing stakeholder agreements** that allow for collecting data regarding the current capacity of the region's health system, synthesizing the data to understand the needs of the system, and determining areas of the system that may be overwhelmed

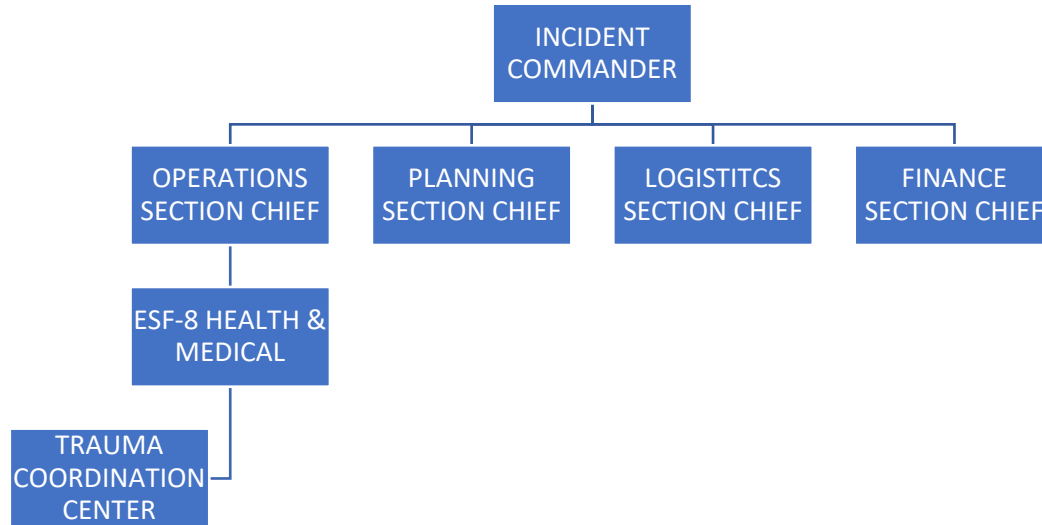


Figure 1

REGION 5 Trauma Coordination Center Staffing

Region 5 Trauma Coordination Center staff and experts are critical to its operations. The Trauma Coordination Center staffing should come from the local healthcare delivery system, as the load-balancing responsibilities of the Trauma Coordination Center require a high degree of medical and hospital operational expertise and familiarity.

The plan identified the following five key types of staff for the Trauma Coordination Center (see Figure 2) and role/required experience below:

1. **REGION 5 Trauma Coordination Center Director** – Serves as the unit manager and oversees REGION 5 MCI TRAUMA COORDINATION PLAN operations. **Experience:** Healthcare operations and emergency management, particularly healthcare system response. This role will be filled by a Region 5 Incident Management Team (IMT) member or the Regional Medical Assistance Team (RMAT) Commander. A liaison will be assigned to coordinate with state and local ESF-8s.
2. **Medical Officer** – Oversees the medical team, support personnel, and clinical resource allocation. Responsibilities include, but are not limited to, the following activities:
 - Evaluate the clinical acuity of potential transfers.
 - Evaluate the impact of transfer on clinical operations.
 - Evaluate the potential need for transfer, risks, and benefits.
 - Provide emergency medical consultation via phone to referring facilities, particularly smaller community hospitals that may have to manage a critically ill patient awaiting transfer for much longer than usual.

Coordinates with other county EMS medical directors. **Experience:** Physician with experience in emergency care, critical care, trauma, and/or mass causality. This role will be filled by the County EMS Medical Director in a non-impacted county or designee.

Two paramedics will be assigned to the Medical Director to assist with triage.

3. **Call Takers** – Manage incoming calls to the Trauma Coordination Center and ensure requests are entered in the appropriate platform by the requestor. **Experience:** Administrative staff, ideally with a background in EMS or public safety. These roles will be filled by 311 staff in the impacted county. Scripting has been provided and exercised.
4. **Transfer Coordinators** – Matches the referral hospital and receiving hospital appropriate for the patient’s acuity. Links the referring physician with the admitting physician at the receiving hospital, including needed clinical documentation for physician review to determine appropriateness of transfer. **Experience:** Charge nurse, nurse manager, or other hospital clinical staff with background in patient access and flow/throughput. This role will be filled by hospital staff experienced in transfer coordination in a non-impacted county within the region.
5. **Transport Coordinators**– Coordinates the transportation of patients between the facilities as required. **Experience:** Paramedic supervisor (preferred) or paramedic or emergency medical technician with strong knowledge of regional systems and incident management. There will be at least two transport coordinators, including one from the impacted county and one from a non-impacted county. In addition, a staff member may be identified to track assets and resources.

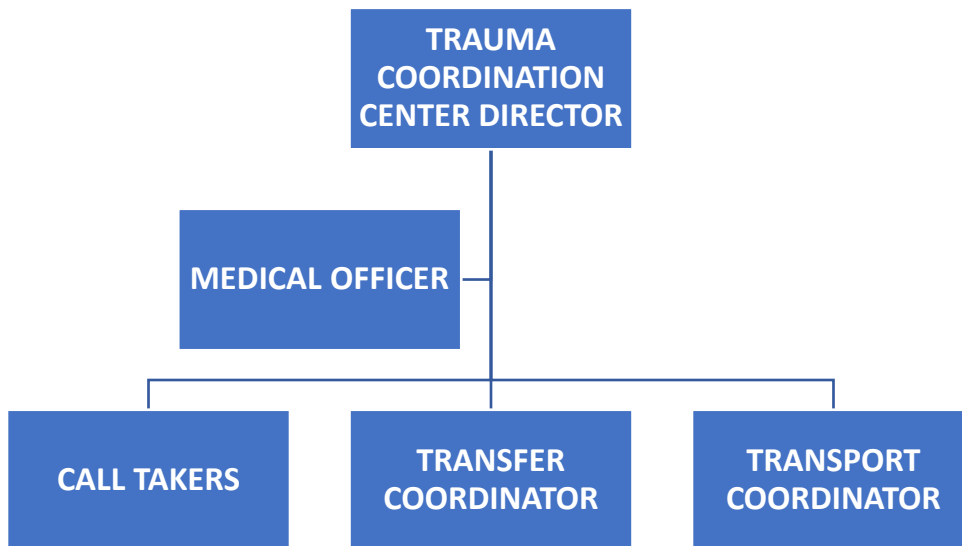


Figure 2

Region 5 Trauma Coordination Center Operations

Once the Trauma Coordination Center is activated, it will be staffed at a minimum by the Director, Medical Officer, Call Takers and Transfer and Transport Coordinators as described above. Additional positions will be added at the discretion of the Director.

The Trauma Coordination Center director will perform the following activities:

- Determine the location of the Trauma Coordination Center and if staff will report on-site or virtually.
- Decide when additional staff are needed.
- Distribute the Trauma Coordination Center contact number through local public health, emergency management, and member facility Incident Action Plans and Communication Plans.
- Establish robust and secure channels of communications between stakeholders, the Trauma Coordination Center, and the EOC.

Once operational, all plan stakeholders agree to the following activities:

- Submit data to support situational awareness and respond in a timely manner to requests for data.
- Fully cooperate and communicate with each other and the Trauma Coordination Center to effectively respond to the disaster.
- Provide (virtual) POCs who can communicate with the Trauma Coordination Center and with their organizations on a continuous basis, if required.

Information Sharing / Situational Awareness

Effective plan coordination relies on a **common operating picture** made up of information from a range of sources.

Upon notice of RTCC activation, the Coalition will create an event notice in EMResource to assist in notification to all key responders. The event notice will be sent to all hospitals, free-standing emergency rooms, EMS, emergency managers, and all other users of the system. The notice will include all relevant event details and needed contact information.

The Trauma Coordination Center **receives and shares** real-time emergency response information on the current status of the healthcare delivery system. The Trauma Coordination Center may also **collect** information from other stakeholders to help local ESF-8 partners assess their resource requests and assist in their management processes (e.g., from a healthcare coalition cache, partner mutual aid, or from deployed state or federal resources).

The Region has established **essential elements of information (EElS)**. Once activated, the Trauma Coordination Center must validate these **EElS** for the incident, add additional EElS as needed based on the incident, and determine the method for sharing EElS and the reporting time intervals.

Facility Reporting of EEIs

All member healthcare facilities (acute, non-acute, and alternate care sites) within Region 5 will report their EEIs at the request of the Trauma Coordination Center through the designated platform, such as EMResource or WebEOC. The information will be updated twice daily, or at an interval defined by the Trauma Coordination Center for the duration of the incident. The following are the healthcare facility EEIs that may be reported to the Trauma Coordination Center.

- Reporting date
- Hospital name
- County name
- Structural damage
- Evacuation type
- Evacuation status
- Reentry status
- Power status
- Generator fuel status
- Generator fuel type
- HVAC generator status
- Normal water supply
- Dialysis reliable water supply
- Sewer status
- Immediate needs
- Total number of non-ICU inpatient beds, including surge beds
- Total number of staffed available non-ICU beds
- Total number of ICU beds, including surge beds
- Total number of staffed available ICU beds
- Total number of ventilators, including converted machines
- Total number of ventilators available
- Staffing status
- Personal Protective Equipment status
- Additional resource availability, as applicable

Note: Additional EEIs may be identified based on the specific event

EMS Agency Reporting of EEIs

All member EMS agencies within the Region 5 boundary will report their EEIs at the request of the Trauma Coordination Center using the identified platform. The information will be updated twice daily, or at an interval defined by the Trauma Coordination Center for the duration of the incident.

The following are the EMS agency EEIs that may be reported to the Trauma Coordination Center:

- General status of the EMS agency
- Total number of staffed Critical Care Transport ambulances
- Total number of staffed ALS ambulances

- Total number of staffed BLS ambulances
- Total number of paratransit vehicles
- Total number of staffed air medical transport assets
- Additional resource availability, such as ambulance buses and non-medical transport vehicles, as applicable
- Additional EEIs may be identified based on the specific event

REGION 5 Trauma Coordination Center Reporting of EEIs to State ESF-8:

The State ESF=8 will establish the method and frequency for the Trauma Coordination Center to report EEIs. These communications will optimally occur twice daily, or as otherwise specified by the State ESF-8.

Patient Movement Request

The primary purpose of patient movement and tracking within the plan is to decompress overwhelmed healthcare facilities through an equitable distribution of patients. The Trauma Coordination Center will coordinate the inter-facility transfer of patients, including to alternate care sites, if all conventional care resources in the region have been exhausted and the State ESF-8 is unable to find conventional care resources in neighboring regions.

The plan **does not replace 911 operations** for pre-hospital transport **of patients originating outside of the healthcare system.**

The steps for conducting a patient movement request are described below:

1. Requesting Facility/EMS Transport Unit Communicates Request

The request for patient movement can be made by the requesting facility or EMS transport unit by calling Orange County 311 at 407-836-3111. The Coalition will send a reminder to all health care facilities, EMS agencies and emergency management/ESF-8 when the Trauma Coordination Center begins operation.

The requestor will provide for each patient the information requested in the attached 311 Page 1, including:

2. 311 will transmit the information immediately to the Trauma Coordination Center.

An email is immediately forwarded to the Central Florida Disaster Medical Coalition, and an Excel spreadsheet is updated and uploaded into a virtual repository every 15 minutes. **3 The Trauma Coordination Center Facilitates Patient Placement.**

The Trauma Coordination Center medical director will determine the appropriate level of care and the transfer coordinator will secure a bed. See attached list of transfer resources. Once a receiving facility has been identified and confirms acceptance of the patient(s), the Trauma Coordination Center transfer coordinator will coordinate a clinical provider call between the requesting facility and receiving facility.

4. The Trauma Coordination Center Facilitates Patient Transport

The Trauma Coordination Center transport coordinator will coordinate with EMS for patient transport. The appropriate EMS asset will be assigned based on the level of care required during the transfer, the acuity of the patient, and the destination. EMS regulations differ widely by jurisdiction. See attached list of transport resources.

5. The Trauma Coordination Center and/or EMS Conducts Patient Tracking

The Trauma Coordination Center has responsibility for patient tracking, with assistance from the EMS agencies conducting the patient transport. See attached patient tracking log. The Trauma Coordination Center is responsible for entering patient data into the system and verifying patient locations and dispositions. See Appendix D: Patient Transfer Checklist.

6. Receiving Facility Initiates Patient Discharge; Trauma Coordination Center May Support Repatriation

The receiving facility will use its normal discharge planning process once a patient is able to be discharged. The Trauma Coordination Center may assist with the repatriation of patients to requesting facilities (e.g., Long-Term Care), to their homes if they are recipients of home-healthcare or home and community-based services (HCBS) or to alternate care sites/convalescent centers until longer-term patient placements can be determined, as needed.

Medical Resource Sharing

The plan makes possible rapid sharing of lifesaving and life-sustaining medical resources, particularly those required for an individual or a handful of patients.

Resource coordination within the Trauma Coordination Center does not replace normal supply chain processes nor the normal ESF-8 resource request process. The plan simply expedites local sharing of medical resources to save lives.

Facilities will follow the normal process for sharing or requesting medical resources, including staff, pharmaceuticals, supplies, and equipment, as outlined in the CFDMC operational plan.

Integration with Local ESF-8

For most jurisdictions within Region 5, the local public health department serves as the ESF-8 lead for coordinating the response to public health and medical emergencies. In Orange County, the Orange County Office of the Medical Director serves as the ESF-8 lead, supported by the health department. Given the considerable efforts required of both ESF-8 and the medical/healthcare system in a large scale ESF-8, the plan focuses on support of ESF-8 through coordination of trauma casualties, allowing ESF-8 to focus on other response needs.

The integration of the plan with the local ESF-8 lead will be accomplished through a liaison from the Trauma Coordination Center to local and state ESF-8s.

Roles and Responsibilities

The plan relies upon a range of stakeholders to provide the personnel and data needed (a) to understand current capacity and gaps in the region's healthcare system and (b) to facilitate load-balancing through patient transfers. Key stakeholder groups include healthcare facilities, EMS, and supporting state and local governmental partners.

The plan comprises diverse stakeholders with varying missions, priorities, and capabilities. Common principles and clear roles and responsibilities will help stakeholders understand their roles in and contributions to the initiative and will help ensure effective patient distribution. Regional stakeholders include trauma centers, acute care hospitals, emergency management, EMS, county health departments, and other healthcare and response organizations.

The following agreements are necessary to successfully implement the plan:

- All stakeholders must agree to submit data to support situational awareness and must agree to respond in a timely manner to requests for data.
- All stakeholders, even if they are market competitors under normal conditions, must agree to fully cooperate and communicate with each other and the Trauma Coordination Center to effectively respond to the disaster or public health emergency.
- All stakeholders must agree to provide (virtual) POCs who can communicate with the Trauma Coordination Center, and with their organizations on a continuous basis, if required.
- Relevant stakeholders must agree to review and process Trauma Coordination Center adjudicated patient-movement requests to ensure that the level of care needed for patients is available at the receiving facility.
- Relevant stakeholders must agree to provide medical consultation and technical assistance and support to regional and local ESF-8 decision makers regarding statewide bed availability, patient movement capabilities, and other resources that can be employed to coordinate patient care.

- On behalf of all stakeholders, the Trauma Coordination Center agrees to submit data to the State Medical Operations Coordination Cells (SMOCCs) to support state-wide situational awareness and agrees to respond in a timely manner to requests for data.

The Trauma Coordination Center may coordinate with or support the ESF-8 Lead Agency in identifying and engaging stakeholders within the region. Below are suggested stakeholder roles and contributions.

Hospitals

In coordination with the jurisdictional ESF-8 Lead Agency, the Trauma Coordination Center staff may engage and collaborate with standalone hospitals (e.g., acute care, specialty, and critical access hospitals), hospital networks, and corporate health systems. Hospital networks and corporate health systems comprise multiple hospitals that may coordinate healthcare delivery as a group.

To enable **effective patient distribution**, **hospitals** may perform the following activities:

- Fulfill data requests from the Trauma Coordination Center.
- Define protocols and channels for communication with hospital leadership; identify POCs with Trauma Coordination Center.
- Agree to accept patients from a mass casualty incident and maximize any additional surge capacity.

Long-term Care Facilities

In coordination with the jurisdictional ESF-8 Lead Agency, Trauma Coordination Center staff may engage and collaborate with long-term care facilities, including nursing homes, skilled nursing facilities, and assisted living facilities to maximize surge capacity for low-acuity patients.

Emergency Management

In coordination with the jurisdictional ESF-8 Lead Agency, Trauma Coordination Center staff may engage and collaborate with jurisdictional emergency managers to support development of operational plans and provide operational support, as needed.

To enable **effective patient distribution**, **emergency managers** may perform the following activities:

- Engage and liaise with 911/Public Safety Answering Points (PSAPs), EMS and other emergency services.
- Identify and/or support the establishment of systems or dashboards for centralized reporting, data collection, communications, healthcare stakeholder triage requests and other operational functions.
- Develop and define protocols, systems, and triggers for activation of complementary emergency support functions.

Emergency Medical Services (EMS)

In coordination with the jurisdictional ESF-8 Lead Agency, Trauma Coordination Center staff may engage and collaborate with EMS agencies (911 and non-911 system agencies) in the region, while recognizing many in the overwhelmed area may not be able to provide transfer assistance.

To enable **effective patient distribution**, **EMS** may perform the following activities:

- Fulfill data requests from the Trauma Coordination Center.
- Develop and/or define clear processes and protocols for 911 emergency transport triage.
- Develop and/or define clear processes and protocols for interfacility transport.
- Assist with identifying ground and aeromedical transport assets to support patient transfers as required.
- Obtain a standard data set for required patient support (e.g., oxygen, intravenous drips, cardiac monitoring, other personnel accompanying).
- Establish clear, reliable modes of communication and governance/decision structures for determining patient transport locations. For example, the Trauma Coordination Center may honor in-system transfer requests, when possible, based on availability.

Governmental Partners

In coordination with the jurisdictional ESF-8 Lead Agency, Trauma Coordination Center staff may engage and collaborate with other federal, state, and local governments. Federal, state, and local departments and programs that may support the plan include the following examples:

- State Department or Division of Public Safety
- State Department or Division of Emergency Management
- State Department of Health (State ESF-8)
- National Guard
- Medical Reserve Corps
- Governmental Mutual Aid or Emergency Management Assistance Compact (EMAC) Partners

Other Coordinating Partners

Other organizations within the jurisdiction may assist with a wide variety of tasks based on their capabilities, including those within the private sector (e.g., hospital associations, vendors, and suppliers), non-governmental organizations (e.g., American Red Cross), and volunteer agencies, as needed or requested.

References: State Patient Movement Plan

311 Page 1

Date:

Time:

Caller Information:

Requesting transfer from: Hospital /EMS:

Organization Name:

Point of Contact:

Phone Number:

Email:

Patient Information:

Patient Name:

DOB (or approximate age):

Gender:

Language: English / Spanish / Other:

Is patient a victim of a Mass Casualty?

(explain if no, the call stops, and the caller is told that the patient should be handled by the hospital transfer center).

If Yes - ask Injuries questions below

Injuries:

Triage Color: (Red, Green, Yellow)

Blood Pressure (text field)

Heart Rate (text field)

O2 Sat (text field)

Is the patient on a ventilator or needs a ventilator? (yes/no)

Does the patient have third degree burns on 30% or more of body? (yes/no)

Does the patient have significant neurological or head injuries? - (yes/no)

Does the patient have penetrating injuries? (yes/no)

If yes, where: (text field)

Does the patient have multiple broken long bones?

Other significant clinical information: (text field)

Call taker name (or ID):

Patient Tracking Log

Information/data below in yellow are provided by 311 (sent via email immediately and updated spreadsheet uploaded into Box every 15 minutes)

Requestor Information

Requesting transfer from Hospital or EMS	Organization Name	Organization POC	POC Phone Number	POC Email

Patient Data

Patient Name	DOB	Gender (M/F)	Language (English, Spanish, Other)	Is patient an MCI victim? Yes / No (If not, stop call - hospital transfer center will handle patient)

Clinical Data

Triage Color: (Red, Green, Yellow)	Blood Pressure (text field)	Heart Rate (text field)	O2 Sat (text field)	If Yes, is the patient on a ventilator or needs a ventilator (Yes/No)	Does the patient have third degree burns on 30% or more of body? Yes/No	Does the patient have significant neurological or head injuries? Yes / No

Does the patient have penetrating injuries? Yes/No	If yes, where: (text field)	Does the patient have multiple broken long bones? Yes / No	Other significant clinical information: (text field)	Call taker name or ID
----------------------------------------------------	-----------------------------	------------------------------------------------------------	------------------------------------------------------	-----------------------

Information/data below is entered by the Regional Trauma Coordination Center staff.

Transfer Information

Medical Officer - Clinical Level of Care Designation (Trauma Center, Burn Center, Acute Care Hospital, Free Standing Emergency Department, Urgent Care Center, Home, Other)	Transfer Coordinator Name:	Transfer to (facility name/address)	Accepting Physician Name:
-----------------------------------------------------------------------------------------------------------------------------------------------------------------------------	----------------------------	-------------------------------------	---------------------------

Transport Information

Transport Coordinator Name:	Transportation Asset Needed (Air Rotor/Fixed Wing, ALS Non-Transport, ALS Transport, BLS Transport, Ambu-bus, Private Vehicle, Other)	Asset Confirmed (entity/POC)	Transfer Completed	Data Input Name
-----------------------------	---------------------------------------------------------------------------------------------------------------------------------------	------------------------------	--------------------	-----------------

Transfer Resources – Hospital System Transfer Centers

Orlando Health: 407-649-6838

AdventHealth Central Division: 407-303-7816 or 8700

HCA Florida: 877-550-0337

Health First: 321-434-7296

Tampa General: 813-844-7400

Halifax: 386-254-4355

Cleveland Clinic: 216-448-7000

Steward (Rockledge/Melbourne):

Nemours (Children's): 855-543-2364

UF Health (Leesburg): 800-987-2673

St. Lucie Hospital: 772-335-4000:

Baycare: 727-561-2449

AdventHealth East: 386-231-2337

Lawnwood: 772-461-4000

Lakeland Regional: 863-687-1100

Transport Resources

Orange County Med Comm: 407-737-2455

Note: MedComm can contact the agencies in county or out of county via the Florida Fire Chiefs agreement

AMR: 407-298-6700

American: 407-302-1355

County ESF-8

Brevard County:
321-637-6675
esf8@brevardcounty.us

Indian River:
772-226-3996 or 772-226-3997
miranda.hawker@flhealth.gov
barbara.progulske@flhealth.gov

Lake:
352-253-9908
eocesf08@lakecountyfl.gov

Martin:
772-419-2676
eoc_esf8@martin.fl.us

Orange:
407-672-1538 or 407-672-1540
ESF8.EOC@ocfl.net

Osceola:
(407) 742-9000
Georgianne.Cherry@flhealth.gov ?

Seminole:
407-665-1867, or 407-665-1868 / Fax: 407-665-5036
FLSCESF8@seminolecountyfl.gov

St. Lucie:
772-462-8160, or 772-462-8161, or 772-462-8168, or 772-462-8169
slchd@stlucieco.org

Volusia:
386-254-1500 ask for ESF-8
Christopher.Dorans@flhealth.gov ?